

Judy Turner Baxter COACH/Administrator

1980-1985 Assistant Athletic Director and head of the women's intercollegiate athletic programs.

Coached Women's Lacrosse 1978-1985

Lead Lehigh to NCAA Quarterfinals in 1984 & 1985

Won ECC Title in 1985

Posted a Record of 75-35-1 ; winning nearly 70% of her games

1984, 1985 PAIAW Coach of the Year

Year	Record	Career Record
1978	5-4-1	5-4-1
1979	8-2	13-6-1
1980	7-3	20-9-1
1981 (Regional Champion, 2nd at Nationals, AIAW DII)	12-5	32-14-1
1982 (Regional Runner Up, 2nd at Nationals, AIAW DII)	8-8	40-22-1
1983 (ECC Runner-Up, DI)	9-5-1	49-27-1
1984 (NCAA Tourn, 2nd ECC, DI #8 in Nation NCAA QuarterFinals)	13-5	62-32-1
1985 (#8 in Nation, ECC Champion DI)	13-3	75-35-1
2003	10-4	85-39-1 (.685)

Coached Women's Field Hockey 1978-1985

Outside of Lehigh:

Played on the US Lacrosse and the US Field Hockey Teams

US FH Team qualified for the 1980 Olympic Games

US Lacrosse Team won a world championship

Baxter brings extensive coaching and playing experience to Lehigh. She coached the Lehigh women's lacrosse and field hockey teams from 1978-1985. At Lehigh, she led the lacrosse team to the NCAA Quarterfinals in 1984 and 1985, while capturing an East Coast Conference title in 1985. The two time ECC Coach of the Year won nearly 70% of her games at Lehigh, posting a record of 75-35-1 as Lehigh's women's lacrosse coach. Baxter also won an ECC field hockey title, and was coach of the year twice in that sport as well.

Additionally, Baxter brings impressive playing credentials to Lehigh. In addition to winning letters in three sports at the collegiate level, Baxter also played on both the US Lacrosse and US Field Hockey teams, the latter of which qualified for the 1980 Olympic games, with the lacrosse team capturing a world championship.

### **Field Hockey**

PROGRAM HIGHLIGHTS 1979: EAIWA Regional Championship/AIAW National Tournament 1980: EAIWA Regional Championship/AIAW Top 15 in Nation 1981: EAIWA Third Place 1983: East Coast Conference Champion/#13 NCAA Division I National Ranking 1984: East Coast Conference Champion/#15 NCAA Division I National Ranking

Year	Record	Career Record
1977	7-2-5	
1978	6-5-1	
1979	10-6-4	
1980	6-9-4	
1981	8-9-3	
1982	8-9-0	
1983	16-3-1	
1984	13-5-2	73-48-22 (.510)

COACH: Judith T. Baxter

POSITION: Women's Athletic Director and Head Coach of Field  
Hockey and Lacrosse

YEARS OF LEHIGH COACHING: Field Hockey - 7 Years  
Lacrosse - 7 Years

CAREER RECORD: 93-64-20

EDUCATION: B.S., Ursinus College, 1977

"The discrepancy between winning and not winning in athletics, and in life, exists in the ability to dig deep -- to reach. Working to your fullest potential with unstinted determination and the realization of your capabilities is certainly the framework of intensity.

The go-getters, the players that some might refer to as the blood-and-guts players, are the players I attempt to attract to Lehigh. Skills and pretty stickwork are all important, but these I can teach. The intangible qualities of desire, team spirit and perserverance are more difficult to develop; these can only be developed, not taught or invented.

I realize that Lehigh athletics last only four years -- carrying yourself well on and off the field, however, is a trait that lasts a lifetime. I feel that among other characteristics, this is one trait that Lehigh's athletes seem to refine and utilize the rest of their lives."

Head Coach of Field Hockey. United States Field Hockey Player. Assistant Basketball Coach. Women's Task Force Member. Director of Women's Athletics. Winner of two Regional Titles. Participated in four National Tournaments. Played in two Semi-Final Tournaments. Coach of two National Finalist Championship Teams. Head Coach of Lacrosse. United States Lacrosse Team Captain. Field Hockey Olympic Training Squad. National Sports Festival Team. World Cup Team.

Nothing embodies Coach Baxter's beliefs and philosophy more accurately than her list of accomplishments.

Coach Judy Baxter and her husband Malcolm reside in Audubon, Pennsylvania.







# NEWS FROM LEHIGH

*Judy Turner*  
OFFICE OF PUBLIC INFORMATION  
SAMUEL I. CONNOR, DIRECTOR  
LEHIGH UNIVERSITY  
BETHLEHEM, PENNSYLVANIA 18015  
215 - 861-3170

May 19, 1980 S-279  
Samuel I. Connor  
Joseph Whritenour  
#1,3,HT,SS

RELEASE: UPON RECEIPT

SUBJECT: NEW DIRECTOR FOR WOMEN'S ATHLETIC PROGRAM AT  
LEHIGH UNIVERSITY

BETHLEHEM, PA. (May 20) -- Judy Turner, women's field hockey and lacrosse coach at Lehigh for three years and one of the nation's most outstanding competitors in those sports, has been promoted to the position of assistant director for women's athletics at the University.

Turner, 25, is a native of Lafayette Hill, Pa. She succeeds Barbara Lipkin, of Easton, Pa., who held the post from 1977 until this spring. Mrs. Lipkin resigned following the birth of a son.

Turner received a bachelor of science degree in physical education from Ursinus College in May of 1977 and immediately joined the Lehigh staff to coach field hockey and lacrosse and assist Mrs. Lipkin with administrative duties.

At Ursinus she played on nationally-ranked field hockey teams, which toured England and New Zealand, and she has been on U.S. national lacrosse and field hockey squads. In a field hockey tournament at Vancouver, British Columbia, she scored the only goal to give the U.S. a 1-0 upset victory over Australia and a third-place finish.

She's a registered field hockey and lacrosse official and she coached those sports in the Mt. Pocono Conference, Tobyhanna, Pa., during the summers of 1974 through 1976. She's a graduate of Plymouth-Whitemarsh High School.

(more)

During three years at Lehigh she has coached field hockey and lacrosse teams to three winning seasons in each sport. Her field hockey teams have a 22-11-10 record and last fall they placed fourth in the Div. 2 Nationals at Princeton, the first time a Lehigh women's squad ever participated in a national tournament. Lehigh was undefeated (6-0-5) in 1977, 6-5-1 in 1978 and 10-6-4 in 1979.

Women's lacrosse has a 20-9-1 overall record having finished 5-4-1 in 1978, 8-2 in 1979 and 7-3 this spring. Turner's overall coaching mark at Lehigh is 42-20-11. She will continue to coach those sports in her new position.



# NEWS FROM LEHIGH

OFFICE OF PUBLIC INFORMATION  
SAMUEL I. CONNOR, DIRECTOR  
LEHIGH UNIVERSITY  
BETHLEHEM, PENNSYLVANIA 18015  
215-691-7000 • EXT. 304

JUDITH H. TURNER  
Head Coach of Field Hockey and Women's Lacrosse

Judy Turner, Ursinus '77, is completing her first year as a member of the Lehigh athletic staff.

She's from Lafayette Hill, Pa., and since 1974 has been field hockey and lacrosse coach for the Mount Pocono, Pa., Field Hockey and Lacrosse Conference during the summers.

She has been a member of U.S. national lacrosse squads since 1975 and of U.S. national field hockey squads since 1976.

Last fall she coached the Lehigh women's field hockey team to an undefeated record, 6-0-5, and this spring her women's lacrosse squad had a 5-4-1 mark for an overall 11-4-6 total.



BROCHURE BIBLIOGRAPHY

JUDITH H. TURNER

Assistant Director of Athletics - for Women

Head Coach of Women's Field Hockey and Lacrosse

Fifth year at Lehigh University

Graduate of Ursinus College in 1977 - B.S. (Health and Physical Education).

Played on nationally ranked Field Hockey and Lacrosse teams, which toured Great Britain and New Zealand.

Member of the U.S. Field Hockey Team from 1976-1980. Tours to Trinidad/Barbados and Vancouver.

Participated in the 1978 and 1979 National Sports Festival in Colorado Springs. Also participated in the 1979 World Cup Field Hockey Championship in Vancouver, British Columbia, where the team finished third, thereby qualifying for the 1980 Olympics.

Member of the U.S. Lacrosse Team from 1975-1981. Tour to Australia in 1981 as Captain.

Directed Lehigh teams to 3 national championships and 4 regional championships.

EAIWA Regional Championships in Lacrosse, 1981, and Field Hockey, 1979.

Finished second in the nation in Lacrosse, 1981, and fourth in Field Hockey, 1979.

## R E S U M E

### PERSONAL

Name: Turner, Judith H. Position Desired: Health and Physical Education

Home Address: 4011 Fairway Road College Address: 724 Main Street  
Lafayette Hill, PA 19444 Collegeville, PA 19426

Home Phone Number: 215-828-1299 College Phone Number: 215-489-9980

Age: 21 Date of Birth: 05/06/55 Marital Status: Single

### EDUCATION

High School: Plymouth-Whitemarsh, Plymouth Meeting, PA 19462

College: Ursinus College, Collegeville, PA 19426

College Major Field: Health and Physical Education

College Degree: Bachelor of Science Date of Degree: May 29, 1977

### TEACHING EXPERIENCE

Student teaching completed at Trappe Elementary School, Hatfield Elementary School, Gwyn Nor Elementary School, and North Penn Senior High School.

Grade Levels: K-12

Subject Areas: Health, Physical Education (including Swimming), Adaptive Physical Education, Special Education (including Educables, Trainables, Learning Disabilities, Auditory Impairments), Coaching and Officiating Major Sports, and Intramurals.

### WORK EXPERIENCE

✓ Field Hockey and Lacrosse Coach for the Mount Pocono Hockey Conference, Tobyhanna, PA. Summers 1974-1976.

✓ Field Hockey and Lacrosse Official. 1975-1977.

Student Representative for the Ursinus College Admissions Department. 1975-76.

Waitress in Ocean City, NJ. Summers 1971-1976. Waitress at Ursinus College. 1973-1977.

### COLLEGE ACTIVITIES AND HONORS

Dean's List; Member of "Who's Who Among Students in American Universities and Colleges"; Whitian's Society (Ursinus' Women's Honor Society)-- secretary;

Physical Education Student-Teacher Advisory Committee--chairman; Varsity Field Hockey--captain; Varsity Basketball; Varsity Lacrosse--captain; Intra-mural Soccer, Volleyball, Softball; Senior Life Saving; Water Safety Instruction; Member of the Ursinus College Field Hockey Touring Squad--England, 1974, South Africa, 1977; Member of U.S. Lacrosse Squad--1975,1976; Member of U.S. Field Hockey Squad--1976-1977; Women's Athletic Association--president; Education Club--president; Tau Sigma Gamma Sorority--social chairman; Freshman Orientation Program--Big sister-Little sister Organization; Volunteer for the Ursinus College Alumni Association Fund Drive.

#### REFERENCES

References are on file in the Placement Office at Ursinus College.

Miss Adele P. Boyd: Professor of Health and Physical Education  
113 E. Germantown Pike Ursinus College  
Plymouth Meeting, PA, 19462  
*S. C. Pina*  
*215-828-4205*  
*6-21-54*

Mr. Raymond V. Gurzynski: Professor of Health and Physical Education  
81 Skyline Drive Ursinus College  
Audobon, PA 19407

Mr. Elmer A. Lissfelt: Professor of Education  
Alden Park Manor 801C Ursinus College  
Philadelphia, PA 19144

Miss Joan Moser: Co-operating Teacher of Health and Physical Education  
339 Lismore Road North Penn Senior High School  
Glenside, PA 19038

Miss Elizabeth Williams: Professor of Health and Physical Education  
113 E. Germantown Pike Plymouth-Whitemarsh Senior High School  
Plymouth Meeting, PA 19462

# Judy Turner Prepares for Field Hockey in

By BEATRICE TAYLOR  
Globe-Times Sports Writer

The Russians recently ordered three million field hockey balls from England.

Is it some communist plot to corner the market on hockey balls and drive the price up, causing the demise of the capitalist system?

No, the Russians are preparing for the 1980 Olympics when women's field hockey will be included for the first time. Only

six teams will be competing, and, as the host country, the Soviet Union automatically receives a berth.

The trouble is Russian women have never played field hockey before. But the government is now introducing the sport so that it will be able to field a team for the 1980 Games in Moscow.

The United States is also preparing itself for a berth, but by starting developmental camps, scheduling international com-

petition for the national team and beginning to pay for part of the members' expenses.

★ ★ ★

And Judy Turner, Lehigh's rookie field hockey coach who led the team to an undefeated 6-0-5 regular season record, is right in the middle of this build-up.

Turner is one of 33 women on the U.S. Field Hockey team which, under the guidance of Vinnie Gros, is being primed and prepped for the Olympic Games. Gros coached West Chester to two straight national collegiate championships.

For the past two years, team members have been chosen from those attending developmental camps all over the country. Next year, the camps will also be open to high school students for the first time.

Turner will be attending a development camp later this month in California where players will be chosen for two teams that will go on international tours in March.

The top squad will go to Wembley, England, for the annual tournament there.

"It's just one game, but it's the biggest game of the year. There are over 60,000 spectators," Turner said.

The other squad will participate in a tourney in Trinidad with teams from all over the world.

The American women will be competing as underdogs, however.

"The amount of control the European women have is incredible. When they field the ball, it doesn't deflect off their sticks — they have more time to think, they don't have to retrieve the ball, and there's less time for the defense to try and steal it away," Turner said. "Plus they have much better facilities. They even have indoor fields so they can play year-round. And there are some women still playing 20 years after they graduate from school."

The only advantage the Americans have, Turner said, is their greater speed.

She said that Gros keeps in contact with all the players during the year and that the Princeton coach emphasizes improving basic stickwork.

"We know what we're supposed to do, but we don't execute properly," Turner said. "Vinnie has told us she would rather see us make a mistake trying to do something right rather than successfully getting away with sloppy stuff. For when you play top-notch competition, they're not

going to let you get away with it."

★ ★ ★

Turner has been playing hockey for 11 years, ever since she was in the sixth grade. She played four years at Plymouth Whitmarsh High School and continued playing throughout college at Ursinus, one of the top teams in the country.

This fall she played with the Ursinus Alumni Club and was one of the players representing the Philadelphia section at the U.S. Field Hockey championships in November in Colorado. The Philly sectional team placed third.

With all this experience, does Turner feel she has mastered the sport?

"Unfortunately, no," said Turner, who plays on the forward line. "Sometimes I wonder if I ever will."

"But coaching has definitely helped me. You have to break down the skills to be able to teach them, and you can see better how to perform and execute them. Plus I'm much more aware, and I have come to understand why coaches tell you certain things."

She thinks about the Olympics a lot.

"It's hard preparing for the Olympics," she said. "You have to make yourself start working hard now. You have to push yourself now so that when the pressure is on, you'll have the experience when you need it."

But the most immediate thing for the U.S. team to think about is the 1979 World Cup to be held in Vancouver, Canada.

In the last World Cup games in 1975 in Edinboro, Scotland, the U.S. placed ninth out of 36 teams.

"We still have a way to go — we must place well in Vancouver if we want to make it to the Olympics," Turner said. "But it isn't as bad as it appears at first. England, Scotland, Wales and Northern Ireland all placed above us, but in the Olympics, they are all represented by one team, that of Great Britain."

And Turner is psyched about defeating the British.

"Field hockey was developed there, and they are the best in the world," she said. "It would be so great to beat them."

Field hockey is probably one of the few areas left where the British have it all over the Americans. But with determined players like Judy Turner around, that superiority may not last for long.



# NEWS FROM LEHIGH

OFFICE OF PUBLIC INFORMATION  
 WILLIAM ARMOLD, DIRECTOR  
 436 BRODHEAD AVENUE  
 BETHLEHEM, PA 18015  
 215-861-3170

	W	L	T	COACH
1973	1	6	0	Helen Bond
74	5	3	0	"
75	10	1	0	"
76	4	4	2	"
77	<del>7</del>	<del>2</del>	<del>5</del>	Judy Baxter
78	6	5	1	"
79	10	6	4	"
80	6	9	4	"
81	8	9	4	1981 *
82	8	9	0	"
83	16	3	1	"
84	<del>13</del>	<del>5</del>	<del>2</del>	"

~~61-42-19~~  
 61-42-19

77  
 68-45-20  
 thru Oct. 6 '84

verified by Judy Baxter 10/8/84

JTS - FH

79

1977 6-0-5

1978 6-5-1

1979 10-6-4

1980 6-9-4

1981 8-8-4

1982 8-9

1983 16-3-1

65-

60 40 19

19 .584

Judy Turner Baxter COACH/Administrator

1980-1985 Assistant Athletic Director and head of the women's intercollegiate athletic programs.

Coached Women's Lacrosse 1978-1985

Lead Lehigh to NCAA Quarterfinals in 1984 & 1985

Won ECC Title in 1985

Posted a Record of 75-35-1 ; winning nearly 70% of her games

1984, 1985 PAIAW Coach of the Year

Year	Record	Career Record
1978	5-4-1	5-4-1
1979	8-2	13-6-1
1980	7-3	20-9-1
1981 (Regional Champion, 2nd at Nationals, AIAW DII)	12-5	32-14-1
1982 (Regional Runner Up, 2nd at Nationals, AIAW DII)	8-8	40-22-1
1983 (ECC Runner-Up, DI)	9-5-1	49-27-1
1984 (NCAA Tourn, 2nd ECC, DI #8 in Nation NCAA QuarterFinals)	13-5	62-32-1
1985 (#8 in Nation, ECC Champion DI)	13-3	75-35-1
2003	10-4	85-39-1 (.685)

Coached Women's Field Hockey 1978-1985

Outside of Lehigh:

Played on the US Lacrosse and the US Field Hockey Teams

US FH Team qualified for the 1980 Olympic Games

US Lacrosse Team won a world championship

Baxter brings extensive coaching and playing experience to Lehigh. She coached the Lehigh women's lacrosse and field hockey teams from 1978-1985. At Lehigh, she led the lacrosse team to the NCAA Quarterfinals in 1984 and 1985, while capturing an East Coast Conference title in 1985. The two time ECC Coach of the Year won nearly 70% of her games at Lehigh, posting a record of 75-35-1 as Lehigh's women's lacrosse coach. Baxter also won an ECC field hockey title, and was coach of the year twice in that sport as well.

Additionally, Baxter brings impressive playing credentials to Lehigh. In addition to winning letters in three sports at the collegiate level, Baxter also played on both the US Lacrosse and US Field Hockey teams, the latter of which qualified for the 1980 Olympic games, with the lacrosse team capturing a world championship.

### **Field Hockey**

PROGRAM HIGHLIGHTS 1979: EIAW Regional Championship/AIAW National Tournament 1980: EIAW Regional Championship/AIAW Top 15 in Nation 1981: EIAW Third Place 1983: East Coast Conference Champion/#13 NCAA Division I National Ranking 1984: East Coast Conference Champion/#15 NCAA Division I National Ranking

Year	Record	Career Record
1977	7-2-5	
1978	6-5-1	
1979	10-6-4	
1980	6-9-4	
1981	8-9-3	
1982	8-9-0	
1983	16-3-1	
1984	13-5-2	73-48-22 (.510)



COACH: Judith T. Baxter

POSITION: Women's Athletic Director and Head Coach of Field  
Hockey and Lacrosse

YEARS OF LEHIGH COACHING: Field Hockey - 7 Years  
Lacrosse - 7 Years

CAREER RECORD: 93-64-20

EDUCATION: B.S., Ursinus College, 1977

"The discrepancy between winning and not winning in athletics, and in life, exists in the ability to dig deep -- to reach. Working to your fullest potential with unstinted determination and the realization of your capabilities is certainly the framework of intensity.

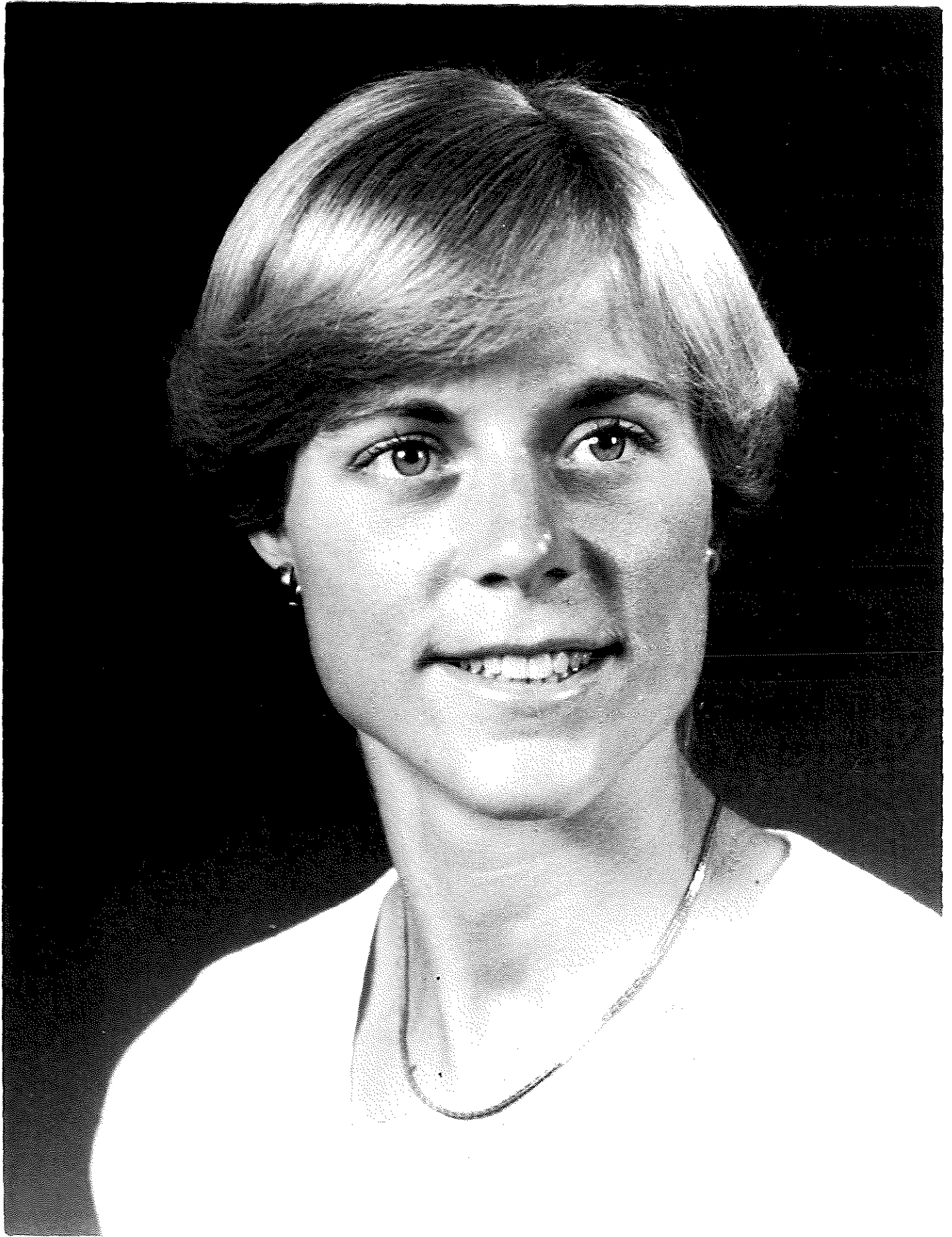
The go-getters, the players that some might refer to as the blood-and-guts players, are the players I attempt to attract to Lehigh. Skills and pretty stickwork are all important, but these I can teach. The intangible qualities of desire, team spirit and perserverance are more difficult to develop; these can only be developed, not taught or invented.

I realize that Lehigh athletics last only four years -- carrying yourself well on and off the field, however, is a trait that lasts a lifetime. I feel that among other characteristics, this is one trait that Lehigh's athletes seem to refine and utilize the rest of their lives."

Head Coach of Field Hockey. United States Field Hockey Player. Assistant Basketball Coach. Women's Task Force Member. Director of Women's Athletics. Winner of two Regional Titles. Participated in four National Tournaments. Played in two Semi-Final Tournaments. Coach of two National Finalist Championship Teams. Head Coach of Lacrosse. United States Lacrosse Team Captain. Field Hockey Olympic Training Squad. National Sports Festival Team. World Cup Team.

Nothing embodies Coach Baxter's beliefs and philosophy more accurately than her list of accomplishments.

Coach Judy Baxter and her husband Malcolm reside in Audubon, Pennsylvania.







# NEWS FROM LEHIGH

*Judy Turner*  
OFFICE OF PUBLIC INFORMATION  
SAMUEL I. CONNOR, DIRECTOR  
LEHIGH UNIVERSITY  
BETHLEHEM, PENNSYLVANIA 18015  
215 - 861-3170

May 19, 1980 S-279  
Samuel I. Connor  
Joseph Whritenour  
#1,3,HT,SS

RELEASE: UPON RECEIPT

SUBJECT: NEW DIRECTOR FOR WOMEN'S ATHLETIC PROGRAM AT  
LEHIGH UNIVERSITY

BETHLEHEM, PA. (May 20) -- Judy Turner, women's field hockey and lacrosse coach at Lehigh for three years and one of the nation's most outstanding competitors in those sports, has been promoted to the position of assistant director for women's athletics at the University.

Turner, 25, is a native of Lafayette Hill, Pa. She succeeds Barbara Lipkin, of Easton, Pa., who held the post from 1977 until this spring. Mrs. Lipkin resigned following the birth of a son.

Turner received a bachelor of science degree in physical education from Ursinus College in May of 1977 and immediately joined the Lehigh staff to coach field hockey and lacrosse and assist Mrs. Lipkin with administrative duties.

At Ursinus she played on nationally-ranked field hockey teams, which toured England and New Zealand, and she has been on U.S. national lacrosse and field hockey squads. In a field hockey tournament at Vancouver, British Columbia, she scored the only goal to give the U.S. a 1-0 upset victory over Australia and a third-place finish.

She's a registered field hockey and lacrosse official and she coached those sports in the Mt. Pocono Conference, Tobyhanna, Pa., during the summers of 1974 through 1976. She's a graduate of Plymouth-Whitemarsh High School.

(more)

During three years at Lehigh she has coached field hockey and lacrosse teams to three winning seasons in each sport. Her field hockey teams have a 22-11-10 record and last fall they placed fourth in the Div. 2 Nationals at Princeton, the first time a Lehigh women's squad ever participated in a national tournament. Lehigh was undefeated (6-0-5) in 1977, 6-5-1 in 1978 and 10-6-4 in 1979.

Women's lacrosse has a 20-9-1 overall record having finished 5-4-1 in 1978, 8-2 in 1979 and 7-3 this spring. Turner's overall coaching mark at Lehigh is 42-20-11. She will continue to coach those sports in her new position.



# NEWS FROM LEHIGH

OFFICE OF PUBLIC INFORMATION  
SAMUEL I. CONNOR, DIRECTOR  
LEHIGH UNIVERSITY  
BETHLEHEM, PENNSYLVANIA 18015  
215-691-7000 • EXT. 304

JUDITH H. TURNER  
Head Coach of Field Hockey and Women's Lacrosse

Judy Turner, Ursinus '77, is completing her first year as a member of the Lehigh athletic staff.

She's from Lafayette Hill, Pa., and since 1974 has been field hockey and lacrosse coach for the Mount Pocono, Pa., Field Hockey and Lacrosse Conference during the summers.

She has been a member of U.S. national lacrosse squads since 1975 and of U.S. national field hockey squads since 1976.

Last fall she coached the Lehigh women's field hockey team to an undefeated record, 6-0-5, and this spring her women's lacrosse squad had a 5-4-1 mark for an overall 11-4-6 total.

BROCHURE BIBLIOGRAPHY

JUDITH H. TURNER

Assistant Director of Athletics - for Women

Head Coach of Women's Field Hockey and Lacrosse

Fifth year at Lehigh University

Graduate of Ursinus College in 1977 - B.S. (Health and Physical Education).

Played on nationally ranked Field Hockey and Lacrosse teams, which toured Great Britain and New Zealand.

Member of the U.S. Field Hockey Team from 1976-1980. Tours to Trinidad/Barbados and Vancouver.

Participated in the 1978 and 1979 National Sports Festival in Colorado Springs. Also participated in the 1979 World Cup Field Hockey Championship in Vancouver, British Columbia, where the team finished third, thereby qualifying for the 1980 Olympics.

Member of the U.S. Lacrosse Team from 1975-1981. Tour to Australia in 1981 as Captain.

Directed Lehigh teams to 3 national championships and 4 regional championships.

EAIWA Regional Championships in Lacrosse, 1981, and Field Hockey, 1979.

Finished second in the nation in Lacrosse, 1981, and fourth in Field Hockey, 1979.

## R E S U M E

### PERSONAL

Name: Turner, Judith H. Position Desired: Health and Physical Education

Home Address: 4011 Fairway Road College Address: 724 Main Street  
Lafayette Hill, PA 19444 Collegeville, PA 19426

Home Phone Number: 215-828-1299 College Phone Number: 215-489-9980

Age: 21 Date of Birth: 05/06/55 Marital Status: Single

### EDUCATION

High School: Plymouth-Whitemarsh, Plymouth Meeting, PA 19462

College: Ursinus College, Collegeville, PA 19426

College Major Field: Health and Physical Education

College Degree: Bachelor of Science Date of Degree: May 29, 1977

### TEACHING EXPERIENCE

Student teaching completed at Trappe Elementary School, Hatfield Elementary School, Gwyn Nor Elementary School, and North Penn Senior High School.

Grade Levels: K-12

Subject Areas: Health, Physical Education (including Swimming), Adaptive Physical Education, Special Education (including Educables, Trainables, Learning Disabilities, Auditory Impairments), Coaching and Officiating Major Sports, and Intramurals.

### WORK EXPERIENCE

✓ Field Hockey and Lacrosse Coach for the Mount Pocono Hockey Conference, Tobyhanna, PA. Summers 1974-1976.

✓ Field Hockey and Lacrosse Official. 1975-1977.

Student Representative for the Ursinus College Admissions Department. 1975-76.

Waitress in Ocean City, NJ. Summers 1971-1976. Waitress at Ursinus College. 1973-1977.

### COLLEGE ACTIVITIES AND HONORS

Dean's List; Member of "Who's Who Among Students in American Universities and Colleges"; Whitian's Society (Ursinus' Women's Honor Society)-- secretary;



Physical Education Student-Teacher Advisory Committee--chairman; Varsity  
Field Hockey--captain; Varsity Basketball; Varsity Lacrosse--captain; Intra-  
mural Soccer, Volleyball, Softball; Senior Life Saving; Water Safety Instruction  
Member of the Ursinus College Field Hockey Touring Squad--England, 1974,  
South Africa, 1977; Member of U.S. Lacrosse Squad--1975,1976; Member of  
U.S. Field Hockey Squad--1976-1977; Women's Athletic Association--president;  
Education Club--president; Tau Sigma Gamma Sorority--social chairman;  
Freshman Orientation Program--Big sister-Little sister Organization; Volunteer  
for the Ursinus College Alumni Association Fund Drive.

#### REFERENCES

References are on file in the Placement Office at Ursinus College.

Miss Adele P. Boyd: Professor of Health and Physical Education  
113 E. Germantown Pike Ursinus College  
Plymouth Meeting, PA, 19462  
*215-828-4205* *S. C. Pica*  
*6-21-78*

Mr. Raymond V. Gurzynski: Professor of Health and Physical Education  
81 Skyline Drive Ursinus College  
Audobon, PA 19407

Mr. Elmer A. Lissfelt: Professor of Education  
Alden Park Manor 801C Ursinus College  
Philadelphia, PA 19144

Miss Joan Moser: Co-operating Teacher of Health and Physical Education  
339 Lismore Road North Penn Senior High School  
Glenside, PA 19038

Miss Elizabeth Williams: Professor of Health and Physical Education  
113 E. Germantown Pike Plymouth-Whitemarsh Senior High School  
Plymouth Meeting, PA 19462

# Judy Turner Prepares for Field Hockey in

By BEATRICE TAYLOR  
Globe-Times Sports Writer

The Russians recently ordered three million field hockey balls from England.

Is it some communist plot to corner the market on hockey balls and drive the price up, causing the demise of the capitalist system?

No, the Russians are preparing for the 1980 Olympics when women's field hockey will be included for the first time. Only

six teams will be competing, and, as the host country, the Soviet Union automatically receives a berth.

The trouble is Russian women have never played field hockey before. But the government is now introducing the sport so that it will be able to field a team for the 1980 Games in Moscow.

The United States is also preparing itself for a berth, but by starting developmental camps, scheduling international com-

petition for the national team and beginning to pay for part of the members' expenses.

★ ★ ★

And Judy Turner, Lehigh's rookie field hockey coach who led the team to an undefeated 6-0-5 regular season record, is right in the middle of this build-up.

Turner is one of 33 women on the U.S. Field Hockey team which, under the guidance of Vinnie Gros, is being primed and prepped for the Olympic Games. Gros coached West Chester to two straight national collegiate championships.

For the past two years, team members have been chosen from those attending developmental camps all over the country. Next year, the camps will also be open to high school students for the first time.

Turner will be attending a development camp later this month in California where players will be chosen for two teams that will go on international tours in March.

The top squad will go to Wembley, England, for the annual tournament there.

"It's just one game, but it's the biggest game of the year. There are over 60,000 spectators," Turner said.

The other squad will participate in a tourney in Trinidad with teams from all over the world.

The American women will be competing as underdogs, however.

"The amount of control the European women have is incredible. When they field the ball, it doesn't deflect off their sticks — they have more time to think, they don't have to retrieve the ball, and there's less time for the defense to try and steal it away," Turner said. "Plus they have much better facilities. They even have indoor fields so they can play year-round. And there are some women still playing 20 years after they graduate from school."

The only advantage the Americans have, Turner said, is their greater speed.

She said that Gros keeps in contact with all the players during the year and that the Princeton coach emphasizes improving basic stickwork.

"We know what we're supposed to do, but we don't execute properly," Turner said. "Vinnie has told us she would rather see us make a mistake trying to do something right rather than successfully getting away with sloppy stuff. For when you play top-notch competition, they're not

going to let you get away with it."

★ ★ ★

Turner has been playing hockey for 11 years, ever since she was in the sixth grade. She played four years at Plymouth Whitmarsh High School and continued playing throughout college at Ursinus, one of the top teams in the country.

This fall she played with the Ursinus Alumni Club and was one of the players representing the Philadelphia section at the U.S. Field Hockey championships in November in Colorado. The Philly sectional team placed third.

With all this experience, does Turner feel she has mastered the sport?

"Unfortunately, no," said Turner, who plays on the forward line. "Sometimes I wonder if I ever will."

"But coaching has definitely helped me. You have to break down the skills to be able to teach them, and you can see better how to perform and execute them. Plus I'm much more aware, and I have come to understand why coaches tell you certain things."

She thinks about the Olympics a lot.

"It's hard preparing for the Olympics," she said. "You have to make yourself start working hard now. You have to push yourself now so that when the pressure is on, you'll have the experience when you need it."

But the most immediate thing for the U.S. team to think about is the 1979 World Cup to be held in Vancouver, Canada.

In the last World Cup games in 1975 in Edinboro, Scotland, the U.S. placed ninth out of 36 teams.

"We still have a way to go — we must place well in Vancouver if we want to make it to the Olympics," Turner said. "But it isn't as bad as it appears at first. England, Scotland, Wales and Northern Ireland all placed above us, but in the Olympics, they are all represented by one team, that of Great Britain."

And Turner is psyched about defeating the British.

"Field hockey was developed there, and they are the best in the world," she said. "It would be so great to beat them."

Field hockey is probably one of the few areas left where the British have it all over the Americans. But with determined players like Judy Turner around, that superiority may not last for long.



# NEWS FROM LEHIGH

OFFICE OF PUBLIC INFORMATION  
 WILLIAM ARMOLD, DIRECTOR  
 436 BRODHEAD AVENUE  
 BETHLEHEM, PA 18015  
 215-861-3170

	W	L	T	COACH
1973	1	6	0	Helen Bond
74	5	3	0	"
75	10	1	0	"
76	4	4	2	"
77	<del>7</del>	<del>2</del>	<del>5</del>	Judy Baxter
78	6	5	1	"
79	10	6	4	"
80	6	9	4	"
81	8	9	7	Patricia *
82	8	9	0	"
83	16	3	1	"
84	<del>13</del>	<del>5</del>	<del>2</del>	"

~~61-42-19~~  
 61-42-19  
 77  
 68-45-20  
 thru Oct. 6 '84

verified by Judy Baxter 10/8/84

Due to a shortage of rooms in the College Park, Md. area that weekend, a special block of rooms has been reserved at a discount for Lehigh alumni in the Ramada Inn, 1251 W. Montgomery Ave., Rockville, Md., 20850. This inn, located approximately 25 minutes from College Park, will be the site of a Lehigh dinner before the finals March 18, and will offer special morning and late night food services for the convenience of wrestling tournament rooters.

Anyone desiring a reservation is requested to phone the inn directly at 301-424-4940 specifying that he or she wants to be included under the special Lehigh plan.

## AlumNotes

Lehigh gatherings are scheduled for all "away" football games this season and special information on them is being mailed to all alumni in the vicinity of those contests.

Any alumni may request further details by sending a self-addressed envelope to the Alumni Assn. office, Alumni Memorial Building 27, Lehigh University, Bethlehem, Pa., 18015.

### SATURDAY, SEPT. 17

**Lehigh Club of Northern Ohio:** Reception (4 p.m.), buffet dinner (5:15 p.m.) and post-game party for Lehigh fans attending a football game between the Engineers and Baldwin-Wallace which starts at 7:30 p.m. Special events will be held at the Hospitality Motor Inn, in-

(Continued on Page 2)

and a former coach who guided Engineer mat teams to 18 winning seasons in 18 years from 1953 through 1970, has been elected to the National Wrestling Hall of Fame.

His selection was announced by Bob Dellinger, director of the U.S. Wrestling Federation's Hall of Fame at Stillwater, Okla., where induction ceremonies will take place Saturday, Sept. 24.

Leeman is one of six chosen for their wrestling accomplishments. Others are Bill Koll, current Penn State coach and a teammate of Leeman's at Northern Iowa College; Terry McCann of Iowa, Earl McCready of Oklahoma State, Russ Vis of Los Angeles, Calif., and Henry Wittenberg of CCNY.

Additional inductees will be coaches Paul Keen and Port Robertson of Oklahoma and the late Charley Mayser of Iowa State and Franklin and Marshall, and contributor Jess Hoke, founder and editor of The

Each honored man is accorded the privilege of selecting a person to make formal presentation of his plaque on behalf of the Hall of Fame, and Leeman's will be awarded by his protege and current Lehigh coach, Thad Turner.

Ceremonies on Sept. 24 will mark the second group of wrestling luminaries named to the National Hall of Fame. In last year's charter class the late Billy Sheridan, famed Lehigh coach for 40 years, was included as one of the "founding fathers" of the sport.

Leeman and Sheridan also are members of the Citizens Savings—Helms Foundation Wrestling Hall of Fame at Los Angeles, Calif., along with other Lehigh representatives Eddie Eichelberger, John Engel and the latest selection, Mike Caruso.

Lehigh is shooting for its fifth consecutive winning football season in 1977.

Senior quarterback Mike Rieker, junior split end Steve Kreider and sophomore kicking specialist Kenny Wood provided most of the offensive fireworks while a veteran defensive unit shut down UConn allowing only 14 yards rushing and 117 in the air.

Lehigh ran the ball for 183 yards, picked up 284 more with its passing game, and dominated play virtually all afternoon. The Huskies never came seriously close to scoring.

The landslide represented Lehigh's biggest margin of victory since 1974 when the Engineers piled up a 57-7 total against Lafayette. It was Connecticut's worst defeat since 1931 when the Huskies were whipped by New Hampshire, also 49-0.

Rieker, of Catasauqua, Pa., completed 11 of 19 passes for 240 yards and two touchdowns while playing just the first three quarters.

Kreider, of Reading, Pa., caught six aeriels for 153 yards

L—FG 38 Wood.

L—FG 30 Wood.

L—Ricketson 34 pass from Rieker. Wood kick.

L—April 1 run. Wood kick.

L—Ford 5 pass from Andres. Wood kick.

L—Ringer 8 pass from Andres. Wood kick.

L—Stewart 7 pass from Bernstein. Kick blocked.

Attendance: 9,500.

### INDIVIDUAL LEADERS

		att	yds	avg	td
Rushing					
Aprill, L	.....	12	54	4.5	1
Daniels, L	.....	10	40	4.0	0
Morrissey, L	.....	6	38	6.3	0
Ricketson, L	.....	10	36	3.6	0
Belardinelli, C	.....	11	28	2.5	0

		att	com	int	yds	td
Passing						
Rieker, L	.....	19	11	1	240	2
Chase, C	.....	17	9	1	117	0

		cght	yds	td
Receiving				
Kreider, L	.....	6	153	1
Farbotko, C	.....	4	69	0
Munford, C	.....	3	35	0

# Gibbons, Turner, Sullivan Join Staff

Jim Gibbons, Frank Sullivan and Judy Turner, three coaches from the Philadelphia area, have been added to the athletic staff at Lehigh.

Their appointments were announced by Preston Parr, vice president and dean of student affairs, and Bill Leckonby, director of athletics.

Gibbons, 41, is supervisor of the University's 500-acre Saucon Valley Fields athletic complex and assistant coach of track and

field. He was recommended for the posts by John Covert, Lehigh assistant director of athletics and head coach of track and cross country.

Sullivan, 26, replaces Pat Kennedy as assistant coach of men's varsity basketball following the recommendation of Brian Hill, head coach. Kennedy resigned to accept a coaching position in the New York City area.

Turner, 21, is head coach of

women's field hockey and lacrosse. She was recommended by Barbara Lipkin, assistant director for women's athletics at the University, who moved into this post following the resignation of Helen Bond due to a family relocation.

Gibbons, former assistant director of athletics and an instructor at Bishop McDevitt High School, also had been on the University of Pennsylvania track coaching staff since 1969. His

duties included aiding in organizing and conducting the Penn Relays and NCAA track and field championships. He resided in Glenside, Pa., is a graduate of Northeast Catholic High School and LaSalle College, and has done graduate work at St. Joseph's College.

Sullivan, a native of Lexington, Mass., resided in Ardmore, Pa., and came to Lehigh from the Villanova basketball coaching

(Continued on Page 2)

# SCOREBOARD

—Home Events Capitalized—

## VARSITY FOOTBALL

SEPT.  
 10—CONNECTICUT ..... 49-0 W  
 17—at Baldwin-Wallace ..... 7:30  
 24—PENNSYLVANIA ..... 1:30

OCT.  
 1—at Davidson ..... 2:00  
 8—at Rhode Island ..... 1:30  
 15—at Rutgers ..... 1:30  
 22—+ VIRGINIA MILITARY 1:30  
 29—xxBUCKNELL ..... 1:30

NOV.  
 5—at Gettysburg ..... 1:30  
 12—C.W. POST ..... 1:30  
 19—LAFAYETTE ..... 1:30

(Home games in Taylor Stadium)

+ Upperclassman Parents Day  
 xx Freshman Parents Day

## JR. VARSITY FOOTBALL

SEPT.  
 30—RUTGERS ..... 2:30

OCT.  
 7—KUTZTOWN ..... 2:30  
 14—at E.Stroudsburg ..... 3:00  
 21—at Bucknell ..... 3:00  
 28—at Lafayette ..... 3:00

(Home games in Saucon Valley "bowl")

## CROSS COUNTRY

SEPT.  
 16—at Delaware ..... 4:00  
 24—PENN LASALLE ..... 12:00

OCT.  
 1—Bucknell  
 St. Joseph's  
 Temple at St. Jos. .... 11:00  
 8—E.STROUDSBURG  
 MILLERSVILLE  
 RIDER  
 WEST CHESTER ..... 11:00  
 14—Army  
 Rutgers at Rutgers ..... 3:30  
 22—PAUL SHORT  
 Invitational ..... 11:00  
 29—at Lafayette ..... 11:00

NOV.  
 5—East Coast Conf. Tour-  
 nament at Fairmount Park,  
 Phila.  
 12—IC4A Tournament at  
 Van Cortlandt Park, NYC

(Home meets on Saucon Valley Fields)

The Lehigh Hotline, phone 691-1885, is in its fourth season. Last year more than 33,000 calls were handled on this sports scores and information service.

## SOCCER

SEPT.  
 17—NAVY ..... 2:00  
 24—at Swarthmore ..... 2:00  
 28—at LaSalle ..... 3:00

OCT.  
 1—at Delaware ..... 10:30  
 5—RUTGERS ..... 3:00  
 8—DREXEL ..... 2:00  
 12—at Pennsylvania ..... 7:30  
 15—GETTYSBURG ..... 2:00  
 19—at Rider ..... 3:00  
 22—WEST CHESTER ..... 11:00  
 26—at Lafayette ..... 3:30

NOV.  
 2—MUHLENBERG ..... 3:00  
 5—BUCKNELL ..... 2:00

(Home games on Saucon Valley Fields)

## WOMEN'S FIELD HOCKEY

SEPT.  
 27—at Villanova ..... 4:00  
 29—BUCKNELL ..... 4:00

OCT.  
 8—RUTGERS ..... 11:00  
 11—at Millersville ..... 3:00  
 13—BLOOMSBURG ..... 3:30  
 18—KUTZTOWN ..... 3:30  
 21—ALBRIGHT ..... 3:30  
 25—at Muhlenberg ..... 4:00  
 27—at LaSalle ..... 4:00

NOV.  
 2—at Trenton ..... 2:30  
 4—LAFAYETTE ..... 3:00

(Home games at Sayre Park Field)

## WOMEN'S VOLLEYBALL

SEPT.  
 29—BUCKNELL ..... 4:00

OCT.  
 4—F & M (H) ..... 6:30  
 6—at Allentown College ..... 6:00  
 11—at Rutgers ..... 8:00  
 18—MUHLENBERG  
 NCACC ..... 4:00  
 20—TRENTON ..... 4:00  
 25—at LaSalle ..... 5:30  
 27—MORAVIAN ..... 4:00

NOV.  
 1—CEDAR CREST  
 LCACC ..... 4:00  
 3—VILLANOVA ..... 4:00  
 8—ALBRIGHT  
 UPSALA ..... 4:00  
 11—Mansfield  
 Moravian at Moravian .. 4:00  
 15—at Kutztown ..... 4:00  
 17—at Lafayette ..... 7:00

(Home matches in Saucon Fieldhouse)

# Gridmen Cru

(Continued from Page 1)  
 of 30 and 38 yards and five extra points before having his sixth attempt blocked. He's a soccer-style booter with good range and accuracy.

The afternoon was a long one for the UConns, particularly for Walt Nadzak who was making his debut as Huskies head coach after a successful eight years at Juniata College. Ironically, the man he replaced, Larry Naviaux, also opened his UConn head coaching career against Lehigh. He was beaten 22-20 by the Engineers at Storrs, Conn., in 1973.

For John Whitehead, beginning his second season as Lehigh head coach, it was an afternoon in

which he  
 tunity to  
 supply  
 newcomer

Actually  
 even more  
 final 49-p  
 dicate. Th  
 fumbles,  
 passes and  
 which blur  
 down oppo

The Eng  
 brush as  
 however,  
 effort kept  
 the startin  
 fense smo  
 the halft  
 merely be  
 many poin  
 accumula

Lehigh  
 this mann

First q  
 changed p  
 had ball o  
 dropped b  
 down the  
 gathered i  
 raced int  
 pleting 79

Third  
 drove 56  
 TD comin  
 sophomore  
 Ricketson  
 play cover  
 appeared  
 ripped loo  
 Engineer

LU

Leh  
 athletic  
 underv

Field  
 newcor  
 opens s  
 test at

Volle  
 Barbar  
 Sept. 2  
 against

Lipk  
 promo  
 assista  
 women

## Gibbons, Turner

## Sullivan Here

(Continued from Page 1)

staff where he was an assistant to Rollie Massimino who coached him in high school. He's a graduate of Westfield, Mass. State College with a master's degree from Villanova. He has served as assistant director of the Wildcat Basketball Camp and on staffs of similar camps in Pennsylvania, Maine, Vermont and New Hampshire.

Turner is a native of Lafayette Hill, Pa., was graduated from Ursinus College last May, and has teaching experience at Trappe, Pa., Hatfield, Pa., Gwyn Nor, Pa., and North Penn Senior High School. She is field hockey and lacrosse coach for the Mount Pocono Conference, Tobyhanna, Pa., an official in those sports and a veteran of national and international competition.

At Ursinus she starred on nationally-ranked teams which toured England and South Africa. She also played intramural soccer, volleyball and softball.

## AlumNotes

(Continued from Page 1)

tersection of I-71 and Bagley Rd., Berea, O., near the Baldwin-Wallace football field. Pete Harding, 32485 Creekside Dr., Pepper Pike, O., 44124, phone 216-522-1350, in charge. Bill

# Football Statistics